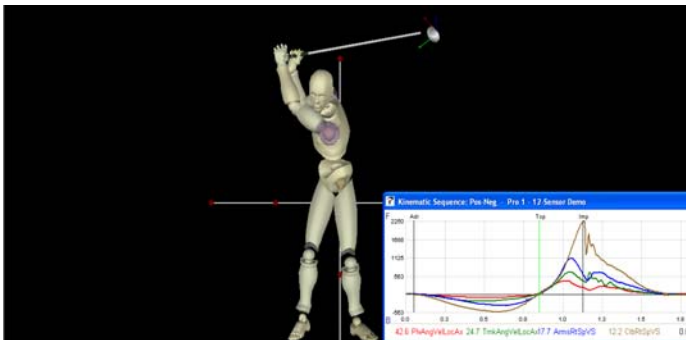


PERFORMANCE GOLF INSTITUTE

31Main Road, Suite 4 Riverhead NY, NY 11901

Swing technique and style is as unique as a player's fingerprints. At PGI, we utilize our motion capture electromagnetic system to develop a three-dimensional figure of your golf swing including all of the rotational speeds of your body.

This provides a precise picture of what is happening during your swing.



We can then match your swing technique with your physical attributes to help you build a more repeatable and efficient golf swing

Thank you for support from Titleist Performance Institute and Advanced Motion Measurement" visit them @ www.mytpi.com and www.amm3D

Marc Wahl 208-2900
marc@northforkpt.com





Factors like strength, flexibility, balance, endurance, nutrition, stability, power, vision and posture all influence the body's mechanics.

Utilizing our physical screening process, we measure your ability to generate and transfer speed and determine the most efficient energy transfer throughout your body. We will isolate any physical limitations, correlate these findings to your swing technique and prescribe a custom-conditioning program.



Launch monitors, force plates, cutting edge 3 dimensional systems give you and your instructor the diagnostics to create the best swing for your body while helping to evaluate your equipments performance around you.

Thank you for support from Titleist Performance Institute and Advanced Motion Measurement" visit them @ www.mytpi.com and www.amm3D





If you're hearing yourself describe your game as "Consistently Inconsistent", you feel like you should be "Hitting it farther", or you're playing in pain, buying a new driver that makes the ball turn one way or the other is NOT the answer. The answer to more consistency and distance is fixing the problem at its source. Invest a little time, energy, and your hard earned money into yourself, get screened to find your body problems, work with a Golf Medical Expert to fix those issues, and you'll play better, more consistent golf with less pain.

North Fork Physical Therapy has the latest technologies from 3D to Launch Monitors and the most highly trained staff in the nation to insure you are correctly treated for what is ailing your game.

Thank you for support from Titleist Performance Institute and Advanced Motion Measurement" visit them @ www.mytpi.com and www.amm3D





Services Available



- Mental golf profiles (65)
- Body and swing analysis w/ webpage and video description (150)
- Launch Monitor w/ full gap, accuracy and spin reports (100/hr)
- Pure Balance evaluation (75)
- TPI 3-D Swing analysis (300)
- Create personal database with future retest ** (150 per)
- Debrief and plan progression, with PGA Professional (150)
- 3-D use after initial evaluation (150/hr)
- We offer mobile service at additional fee
- Package as above at our facility (500) or ala-carte **
does not include data base creation or retest
- Professional Instruction in Golf, Fitness, Equipment and
Injury Recovery varies with discipline

Discount available to Groups and Professional Instructors



pgi PERFORMANCE
GOLF INSTITUTE

diagnostics for optimum performance

Stephen Haggerty
631-298-4300
shaggerty@laurellinkscc.com

Laurel Links Country Club
3D Motion System:
Electromagnetic Sensors

6400 Main Rd
Laurel NY, 11948
laurellinkscc.com

TPI CGFI, PGA
professional



David Kuck
dkuck@optonline.net

Performance Golf Institute
3D Motion System:
Electromagnetic Sensors

31 Main Rd, Suite 4
Riverhead NY, 11901

PT, DPT, CSCS, TPI
CGFI, MP2



Greg Trent
631-681-3078
gt.fitness@yahoo.com

Riverhead

389 Whittier Dr.
Mastic Beach NY, 11951

TPI CGFI, CPT



Evan Martilotta

Marc Wahl 208-2900
marc@northforkpt.com

Performance Golf Institute
3D Motion System:
Electromagnetic Sensors
Other: 12 Sensor electromag
w/TPI3D software

31 Main Road, Suite 4
Riverhead NY, NY 11901

PT, TPI CGFI-
MP3-GB2-GP2

